



Bermuda Lakes
CENTER
Kissimmee at its Best

Experience this exclusive top class development featuring business, professional and medical offices, retail, restaurants and more!



Functional yet cozy atmosphere.
All buildings with a view
at 2100 John Young Parkway.



ARCHITECTURAL DESIGN AND RENDERINGS BY THE SCOTT PARTNERSHIP ARCHITECTURE

SIGNATURE DEVELOPMENT BY



4303 Vineland Road, Suite F-12 - Orlando, FL 32811
(407) 839-2001 xt. 202

NOW PRE-SELLING!
Great investment opportunity!
Grand Opening Summer 2009

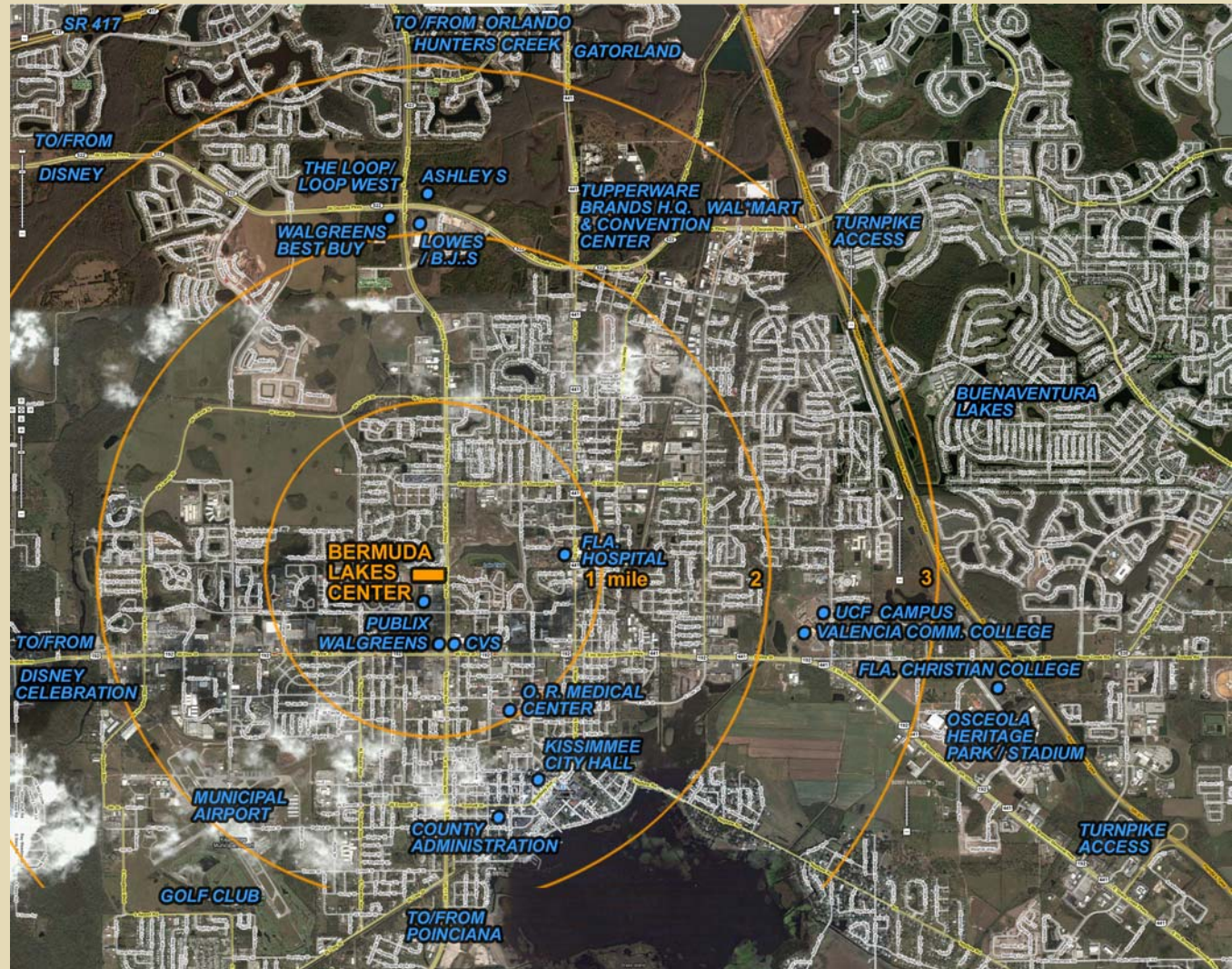
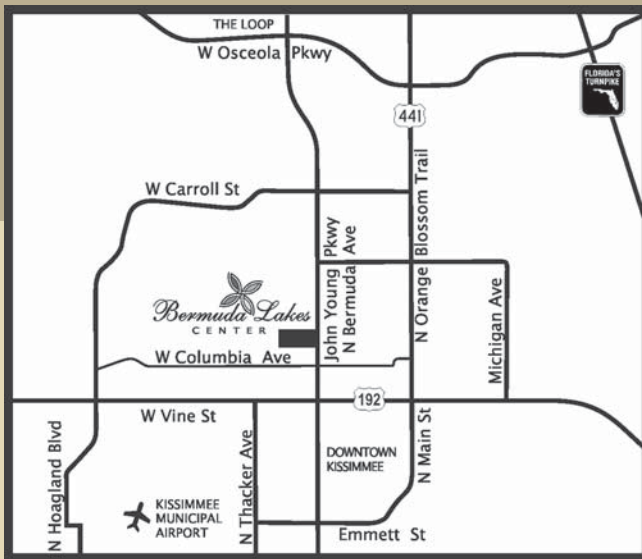
SALES & LEASING



Antonio Romano
(321) 438-3345

AntonioRomano@gmail.com

Location



- At one of Kissimmees gateways
- Excellent visibility: 40,000 average daily traffic
- 700 yards to US 192 / Vine Street
- 1.5 miles to Downtown Kissimmee, City Hall and County administration
- 2.0 miles to Osceola Parkway and The Loop
- 1.3 miles to Florida Hospital and Osceola Regional Medical Center
- 5 minutes to Turnpike access
- Close to Kissimmee and Hunters Creek

SIGNATURE DEVELOPMENT BY



4303 Vineland Road, Suite F-12 - Orlando, FL 32811
(407) 839-2001 xt. 202

Bermuda Lakes
CENTER
Kissimmee at its Best

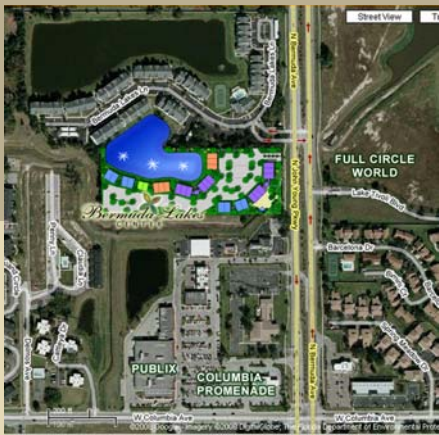
2100 N John Young Parkway, Kissimmee, FL 34741

SALES & LEASING



Antonio Romano
(321) 438-3345

AntonioRomano@gmail.com



- Six acres of lush landscape and hardscape
- Eleven one and two story buildings fronting the one-acre pond or the City canal
- Quite private driveway
- Next to grocery and other convenience stores

The Site

The information contained in this brochure, including plan and renderings are for illustration purposes only, should not constitute any warranties expressed or implied, and may be changed without prior notice. Please refer to the final Sale or Lease Agreement document for accurate data.



SIGNATURE DEVELOPMENT BY



4303 Vineland Road, Suite F-12 - Orlando, FL 32811
(407) 839-2001 xt. 202



Kissimmee at its Best
2100 N John Young Parkway, Kissimmee, FL 34741

SALES & LEASING

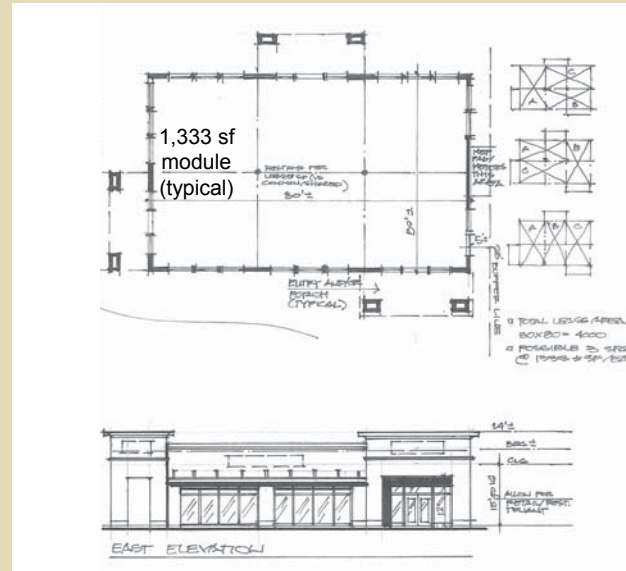


Antonio Romano
(321) 438-3345
AntonioRomano@gmail.com

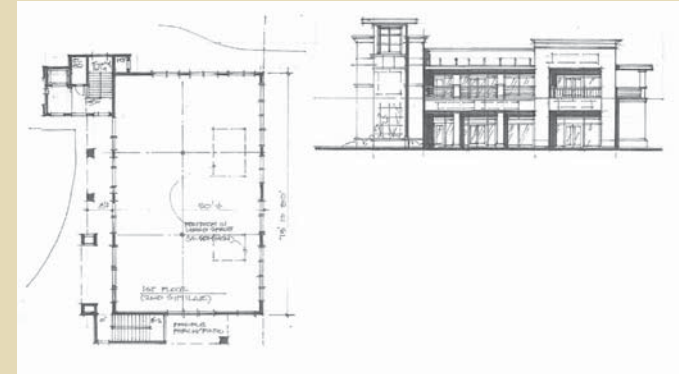
The Buildings



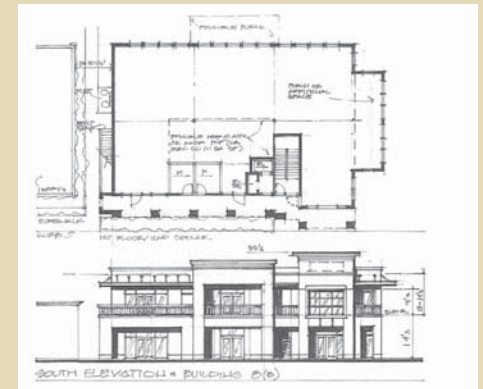
- The size that is right for you: modules 1,000-1,333-1,500 sf available. Buy one or more.
- You may own an entire building: Floorplans from 2,000 to 4,000 sf; Two-story buildings up to 8,000 sf
- Monument, storefront and directory Signage
- 3.5 / 1000 sf parking spaces. Additional parking available for medical offices and restaurants
- All suites delivered in shell condition



Buildings D and H
One-story 4,000 sf Floorplan.
 2,000 and 3,000 sf floorplans are also available



Buildings A & B
Two-Story 4,000 sf Floorplan



Buildings F and G
Two-story, 4,000 sf Floorplan

SIGNATURE DEVELOPMENT BY



4303 Vineland Road, Suite F-12 - Orlando, FL 32811
 (407) 839-2001 xt. 202



Kissimmee at its Best
 2100 N John Young Parkway, Kissimmee, FL 34741

SALES & LEASING



Antonio Romano
 (321) 438-3345
 AntonioRomano@gmail.com